

COLORADO DEPARTMENT OF EDUCATION

STATE BOARD OF EDUCATION

Commissioner of Education
Robert K. Hammond

Chief of Staff and Strategy *
Jill Hawley

Chief Communications Officer
Janelle Asmus

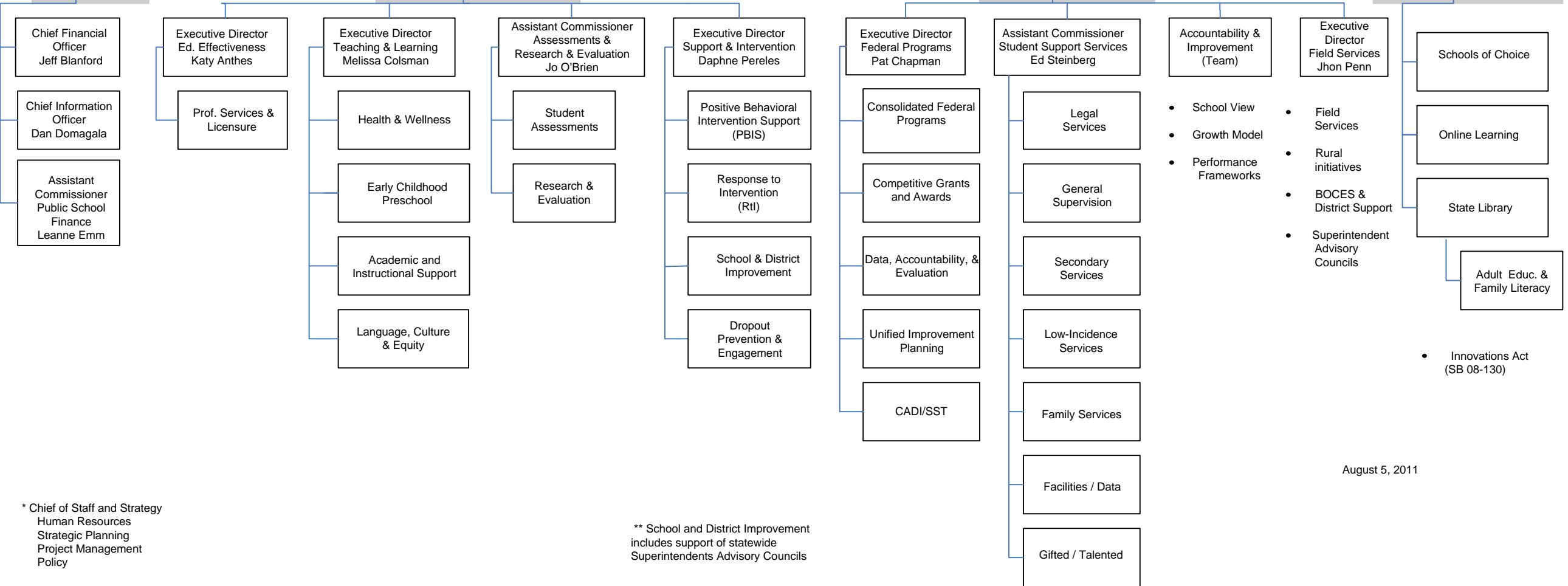
Legislative Liaison
Anne Barkis

Operations (Team)

Deputy Commissioner
Diana Sirko

Associate Commissioner
Keith Owen

Assistant Commissioner of Innovation & Choice
Amy Anderson



* Chief of Staff and Strategy
Human Resources
Strategic Planning
Project Management
Policy

** School and District Improvement includes support of statewide Superintendents Advisory Councils

August 5, 2011